

# Crosby® Kuplex®

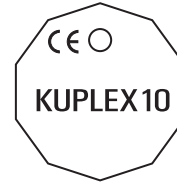
## Components

### Sling Tags

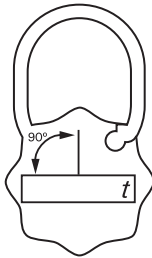
One size tag to cover all KUPLEX slings from 7mm to 32mm.



The reverse of Grade 8 KTS and KTP tags

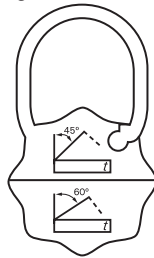


The reverse of Grade 10 KTS10 and KTP10 tags



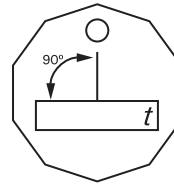
**KTS Tag**

For single leg slings for general service



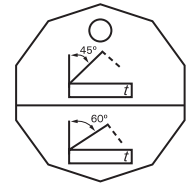
**KTP Tag**

For multi-leg slings for general service



**KTS10 Tag**

For single leg slings for general service

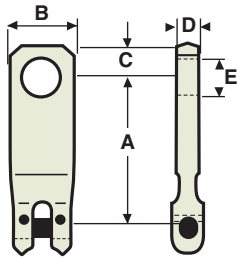


**KTP10 Tag**

For multi-leg slings for general service

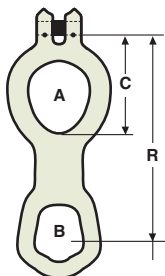
### Skip Lifting Components

All Skip Lifting Components are designed to accommodate 13mm Crosby KUPLEX Grade 8 or Grade 10 short link alloy chain and are supplied in a zinc plated finish. All items are tested and certified in accordance with EN 818-2 and EN 1677.



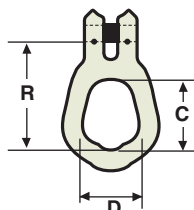
#### Top Suspension Plates

Crosby Stock No.	Type Size/Reference	WLL (t)		A	Dimensions (mm)				Weight (kg)
		8	8+10		B	C	D	E	
2781555	C151401	5.3	6.7	153	62	32	20	36	1.59
2781564	C151402	5.3	6.7	140					1.52
2781573	C151403	5.3	6.7	127					1.4
2781582	C151404	5.3	6.7	114					1.35
2781591	C151405	5.3	6.7	101					1.17
2781608	C151406	5.3	6.7	88					1.03



#### Keep Plate C2247

Crosby Stock No.	Type Size/Reference	WLL (t)		A	Dimensions (mm)				Weight (kg)
		8	8+10		B	C	R		
2781617	C2247	5.3	6.7	95 x 76	74 x 58	133	301	3.48	



#### Single Trunnion Plate C1513

Crosby Stock No.	Type Size/Reference	WLL (t)		R	Dimensions (mm)		Weight (kg)
		8	8+10		C	D	
2781626	C1513	5.3	6.7	112	74	58	1.5